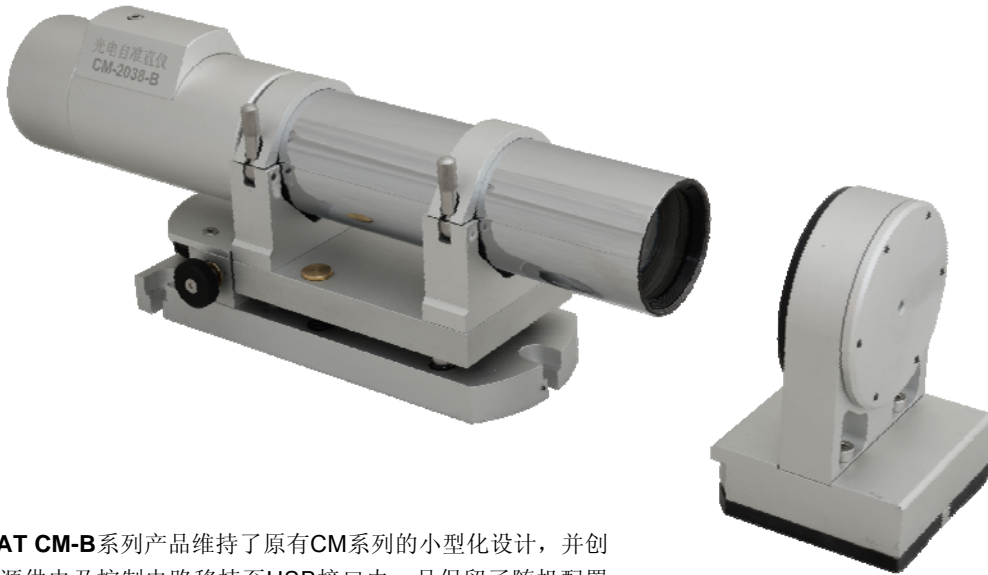


便携式电子自准直仪 COMPACT ELECTRONIC AUTO-COLLIMATOR



AutoMAT CM-B系列产品维持了原有CM系列的小型化设计，并创造性地将光源供电及控制电路移植至USB接口内，且保留了随机配置的集成的磁性反光镜附件以及小型的便携式仪器箱；用户仅需插入USB线缆和运行软件即可启动测量；1角秒的测量精度以及完善的配件系统使得该系列产品尤其适用于机械制造和光学制造现场使用。

The **AutoMAT CM-B** series is an alternative version of the robust and compact CM series of autocollimators. This series of products, are designed with integrated power supply and control within a single USB cable and also maintain the perfect balance between cost and performance purpose, while with easy operation and high reliability features make it well suited for field test and measurement in mechanical and optical applications.

产品特性 (Features)

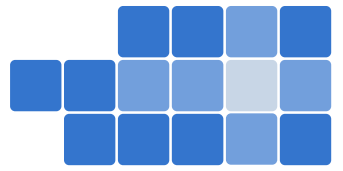
- 小型化便携式设计 (Compact Design);
- 标配磁力反光镜及二维可调底座 (Magnetic Mirror & Adjustable Holder as STD accessory);
- XY双轴同时测量 (Dual-axis measurements);
- 电子目镜 (Electronic viewfinder);
- 长寿命LED光源 (LED Light Sources);
- USB供电，无需电源适配器 (USB Powered, no need for power supply adapter);
- 丰富的测量配附件 (Rich accessories);

规格 (Specifications)

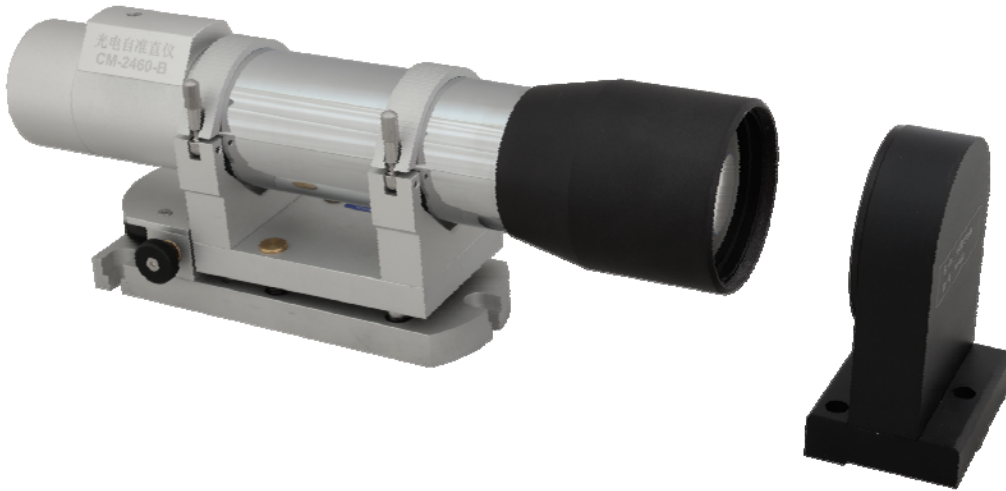
型号 Order Number	CM-1538-B	CM-2038-B
物镜焦距 (Focal Length)	150mm	200mm
物镜口径 (Lens Diameter)	38.1mm (NA. = 85%)	
光源类型 (Light Source)	大功率半导体光源 LED Light Source (中心波长 $\lambda=630\text{nm}$)	
探测器 (Sensors)	高分辨率图像传感器 (High Resolution Image Sensors)	
目镜 (Viewfinder)	软件显示的电子目镜 (Electronic Viewfinder with Software Crosshair)	
测量频响 (Measuring Frequency)	7.5Hz TYP.	
接口 (Interface)	USB 2.0 High Speed Interface with power supply	
测量距离 (Measuring Distance)	10米 (10 meter MAX.)	
最大读数视场 (Measuring Range)	4000"×3200" (arc sec. 角秒)	3000"×2400" (arc sec. 角秒)
分辨率 (Resolution)	0.1" (arc sec. 角秒)	
测量精度 (Accuracy) ^[1]	1" (arc sec. 角秒)	
外形尺寸 (Dimensions) ^[2]	230mm(L)×75mm(W)×105mm(H)	280mm(L)×75mm(W)×105mm(H)
重量 (Weight) ^[2]	1.8KG	2.1KG

[1] 测量精度指标按照 $\pm 1000''$ (角秒)且测量距离 < 1 米范围界定 (Accuracy specification is in $\pm 1000''$ (arcsec.) range and < 1 meter working distance.)

[2] 包含底座尺寸及重量 (Holder Included.)



大口径电子自准直仪 LONG W.D ELECTRONIC AUTO-COLLIMATOR



规格 (Specifications)

型号	Order Number	CM-2460-B
物镜焦距 (Focal Length)		240mm
物镜口径 (Lens Diameter)		60mm (NA. = 85%)
光源类型 (Light Source)		大功率半导体光源 LED Light Source (中心波长 $\lambda=630\text{nm}$)
探测器 (Sensors)		高分辨率图像传感器 (High Resolution Image Sensors)
目镜 (Viewfinder)		软件显示的电子目镜 (Electronic Viewfinder with Software Crosshair)
测量频响 (Measuring Frequency)		7.5Hz TYP.
接口 (Interface)		USB 2.0 High Speed Interface with power supply
测量距离 (Measuring Distance)		25米 (25 meter MAX.)
最大读数视场 (Measuring Range)		1600"×1600" (arc sec. 角秒)
分辨率 (Resolution)		0.1" (arc sec. 角秒)
测量精度 (Accuracy)		1" (arc sec. 角秒)
外形尺寸 (Dimensions)		305mm(L)×80mm(W)×115mm(H)
重量 (Weight)		2.4KG

